



# Roxtec FlamePlus™-gennemføring med udvidelse

Letvægts brandklassificeret gennemføring med knock-out, til boltning

Roxtec FlamePlus™-gennemføringen med udvidelsen er en multikabel- og rørgennemføring til fastgørelse med bolte. Den består af en kompositramme med bred flange, som muliggør fastboltning på beton og mursten uden risiko for revner. Det lette modulopbyggede design, som omfatter en knock-out-plade, gør, at den ikke alene er ideel til sandwichpaneler og forenkler logistik og håndtering, men også sikrer miljøbeskyttelse, indtil kablerne skal trækkes. Tætningsmodulerne kan tilpasses kabler og rør af forskellig størrelse og kan bruges som indbygget reservekapacitet. Sammen med forlængeren på bagsiden udgør den en komplet brandklassificeret installation.

- Letvægt
- Perfekt til eftermontage
- Tæthed i byggefasen

## Produktegenskaber



Brandklassificeret



IP/UL NEMA

## Byggekonstruktion



Sandwich panel



Beton

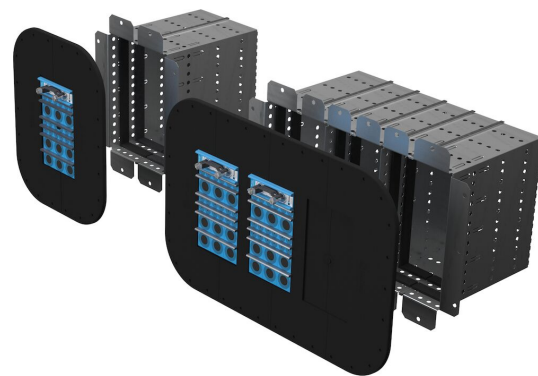


Mursten

## Monteringstype



Boltning



## Normeringer og certifikater

### Brand

- E/EI-klassificering i henhold til EN 13501

### Tæthed

- IP 66

## Rammedimensioner

mm/kg

De nedenstående rammevarianter udgør et begrænset udvalg. Du kan se hele udvalget af rammer og konfigurationer på [roxtec.com](https://www.roxtec.com).

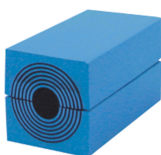
Title	Rammeåbninger	Pakkeareao	Udvendige mål WxHxD	Åbningsmål w x h	Vægt	Art.-nr.
FLAMEPLUS 6x1 WITH EXT. FRAME	1	120 x 180	331 x 433 x 310		5.6	223805
FLAMEPLUS 6x2 WITH EXT. FRAME	2	120 x 180	487 x 433 x 310	351 x 297	8.4	223806
FLAMEPLUS 6x3 WITH EXT. FRAME	3	120 x 180	642 x 433 x 310		11.4	223807

## Data om tætningskomponenter

### Tætningskomponenter



Lubrikant



RM-module med Multidiameter™



wedge og wedgekit



Stayplate



tætningskit

For merne information, besøg venligst [roxtec.com](https://www.roxtec.com).



The product information provided by Roxtec does not release the purchaser of the Roxtec system, or part thereof, from the obligation to independently determine the suitability of the products for the intended process, installation and/or use.

Roxtec gives no guarantee for the Roxtec system or any part thereof and assumes no liability for any loss or damage whatsoever, whether direct, indirect, consequential, loss of profit or otherwise, occurred or caused by the Roxtec systems or installations containing components not manufactured by an authorized manufacturer and/or occurred or caused by the use of the Roxtec system in a manner or for an application other than for which the Roxtec system was designed or intended.

Roxtec expressly excludes any implied warranties of merchantability and fitness for a particular purpose and all other express or implied representations and warranties provided by statute or common law. User determines suitability of the Roxtec system for intended use and assumes all risk and liability in connection therewith. In no event shall Roxtec be liable for indirect, consequential, punitive, special, exemplary or incidental damages or losses.

The Roxtec products are offered and sold in accordance with the conditions of the Roxtec General Terms of Sales. The latest version of the Roxtec General Terms of Sales can be downloaded from <https://www.roxtec.com/en/about-us/about-roxtec/general-terms-of-sales/>

We reserve the right to make changes to the product and technical information without further notice. Any errors in print or entry are no claims for indemnity. The content of this publication is the property of Roxtec International AB and is protected by copyright.

This document was generated on: 2024-04-26